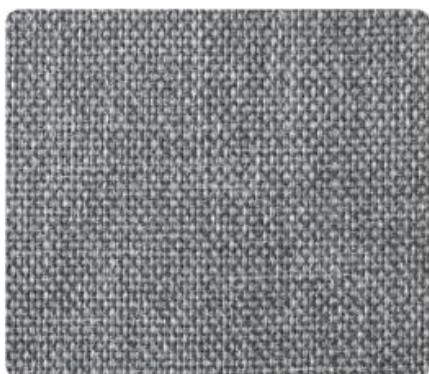


OX28 | Grafitowy



OX19 | Metaliczny



OX21 | Błękitna Laguna



OX22 | Dzins

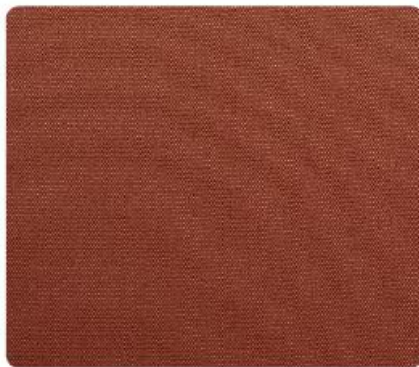


OX31 | Węglowa Czerń

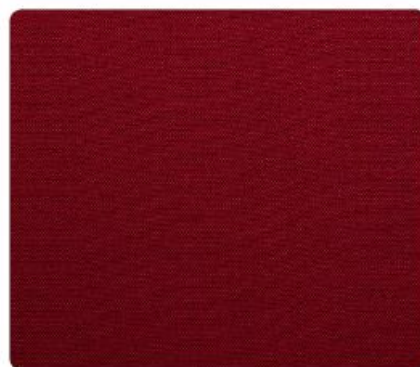
Dane techniczne: 100% Polipropylen | Gramatura: 245 g/m² ± 5% | Martindale: 30 000



ET22 | Ruchome Piaski



ET51 | Oranż Pomarańczy



ET60 | Krwista Czerwień



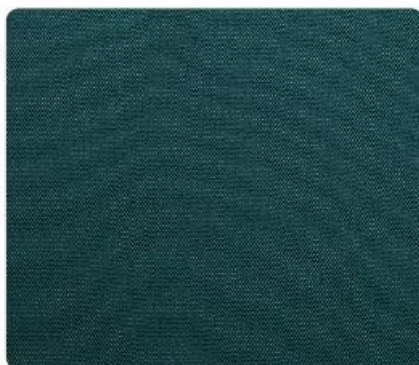
ET35 | Wiosenna Zieleń



ET78 | Landrynkowy Róż



ET65 | Jagodowy



ET85 | Morskie Fale



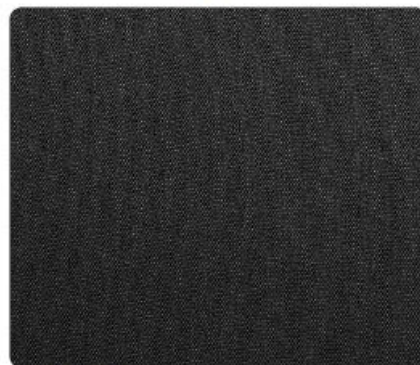
ET80 | Atramentowy



ET90 | Platyna

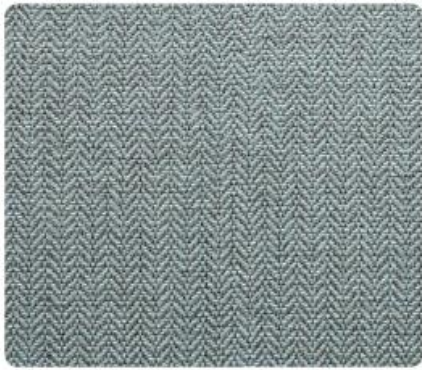


ET91 | Stalowy



ET95 | Karbon

Dane techniczne: 100% Poliester | Gramatura: 350 g/m² | Martindale: 100 000



NO07 | Jasnoniebieski



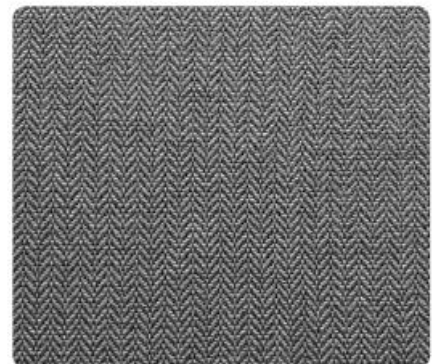
NO08 | Cytrynowy



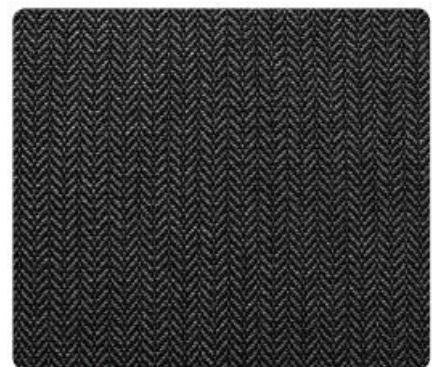
NO05 | Nordic Pink



NO09 | Turkusowy



NO11 | Srebrny



NO12 | Ciemnoszary

Dane techniczne: 100% Poliester | Gramatura: 286 g/m² | Martindale: 25 000



1305 | Ziarno Kawy

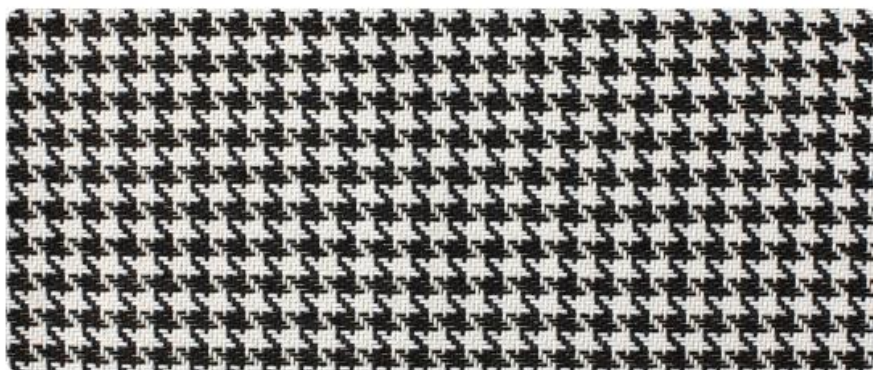


1309 | Śliwkowy

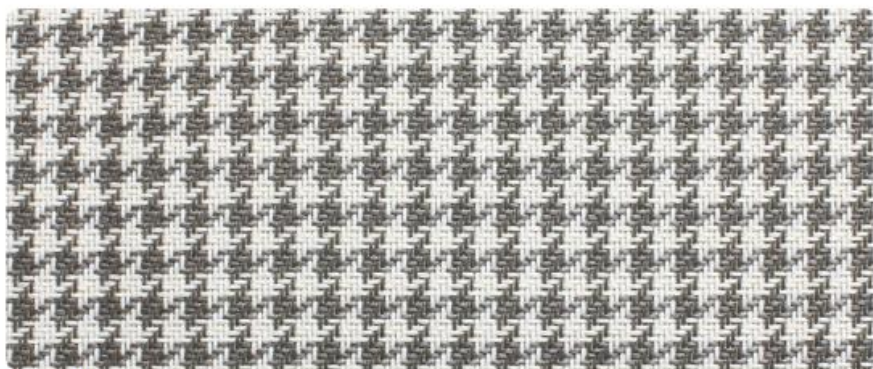


1310 | Kurkuma

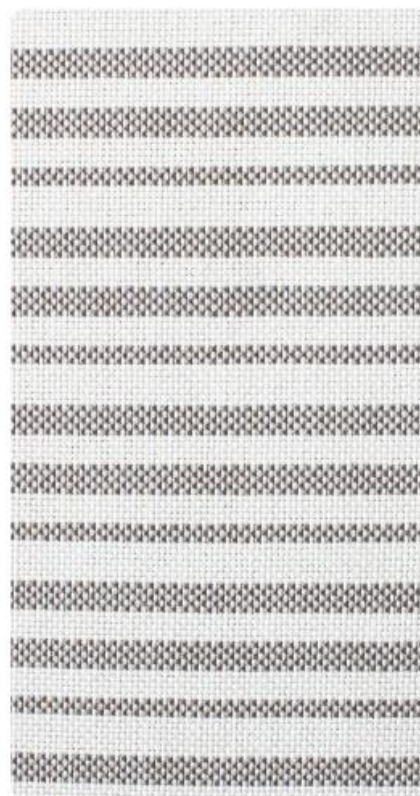
Dane techniczne: 81% Polipropylen, 19% Poliester | Gramatura: 300 g/m²



KE700 | Ciemna Pepita



KE701 | Jasna Pepita



TO706 | Paski

Dane techniczne: 33% Poliester, 67% Olefin | Gramatura: 459 g/m² | Martindale: 32 000